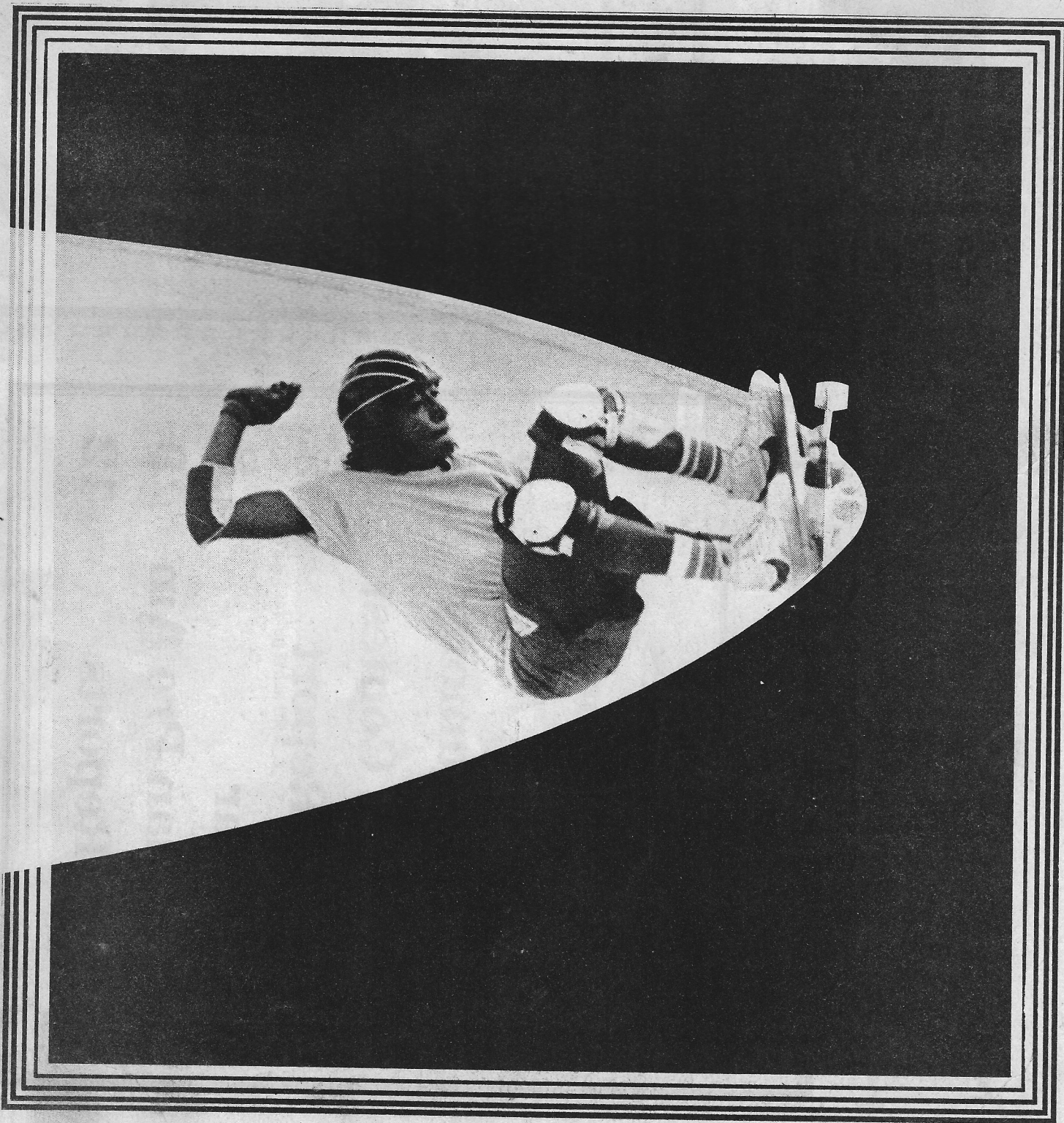


Feb. 1979 Vol. 3 No. 11

50 cents

National Skateboard **REVIEW**



Contents

La Costa Races	3
Park Directory	4
A.R.O.	5
Contest Rumors	5
Michigan Contest	6
Hazard Report	8
Calendar	8
Canadian Pro Am	9
I.S.A. Reports	12

Cover Photo:

JERRY VALDEZ caught in action at Marina del Rey Skatepark (Calif.) by photographer Pete Mark.

DEADLINES: for articles and photos going into the next [Mar.] issue is Feb. 9; camera ready ads are due Feb. 16.



PHOTOGRAPHERS

The NSR needs fresh new photos. Looking for RADICAL action shots, overviews of skateparks, and portrait shots of Pros. Send black and white prints; not slides, negatives or color prints. Put your name, location of shot, and rider's name on back of print; write lightly with a ball point pen. If you do your own developing, print the photo a shade lighter than would look good; the printing process darkens the photo. Photos submitted with articles covering contests or skateboard team will be paid for. Fees should be discussed in advance; call 714/753-6214. Mail to: N.S.R., P.O. Box 2204, Leucadia, CA, 92024. GET ON IT!!

NEXT MONTH: Pro pool contest at Victoria Skatepark (Calif.) and Sensation Basin's W.R.A.P.S. (Fla.)

National Skateboard

REVIEW

EDITOR
Diana Dootson

PHOTOGRAPHERS
T.A. Amori
Paul Hostert

PRODUCTION/ART
Gail Stevens

The NATIONAL SKATEBOARD REVIEW is a monthly publication owned and edited by Diana Dootson. Subscriptions are \$6 per year, \$7.50 per year outside U.S. and Canada. Issues may be bought in bulk orders of more than 25 at 30c a piece. They will be sent C.O.D.

The REVIEW is intended to reflect skateboarding on the local level. I rely on contributions from skateparks, retail shops, contest directors, and individual skaters who want to be heard. To be your voice I need to hear from you. Write: N.S.R., P.O. Box 2204, Leucadia, Ca. 92024.

New Subscriptions

\$6 per year (\$7.50 to addresses outside U.S.).

Name _____

Address _____

City _____

State _____

Zip _____

- I am a Skateboarder
- retailer
- skate park owner
- manufacturer
- investor
- other _____

Send check or money order to P.O. Box 2204, Leucadia, CA. 92024.

Bulk Order Blanks

Thirty cents each with minimum order of 25.
Will come C.O.D. via UPS.

Name _____

Address _____

City _____

State _____

Zip _____

Quantity _____

Ordered by: _____

Please print

- Check one
- Park
- Retail shop
- Club
- Other _____

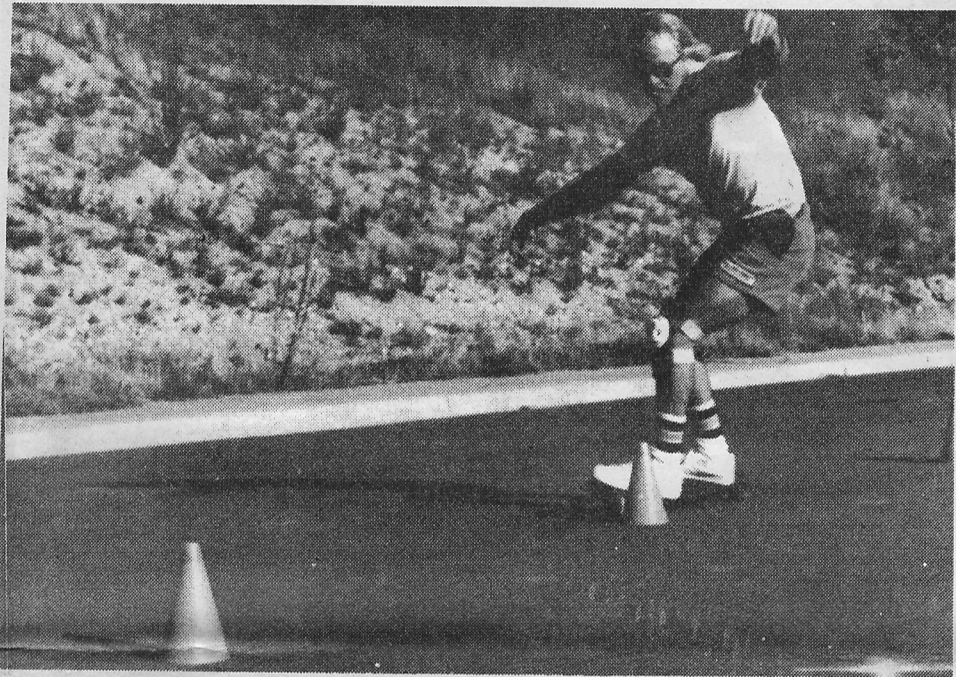
Send to NSR, P.O. Box 2204 Leucadia, CA. 92024



MARC SCHMID running cones at his first La Costa race.



SCOTT HOSTERT taking 3rd in the G.S.



T.R. hisself. As if you couldn't tell.



Ain't it fun?!

La Costa Races

The December La Costa races were held on Dec. 10. We plan to race again in Jan; but not before this goes to press. Seems there's a race monthly now. Call around the 1st of the month to find out when (714/753-6214).

Gib Lewis provided the electrical timing for this afternoon. Giant slalom course was by Gib Lewis; the Tight Slalom was by Tommy Ryan.

RESULTS

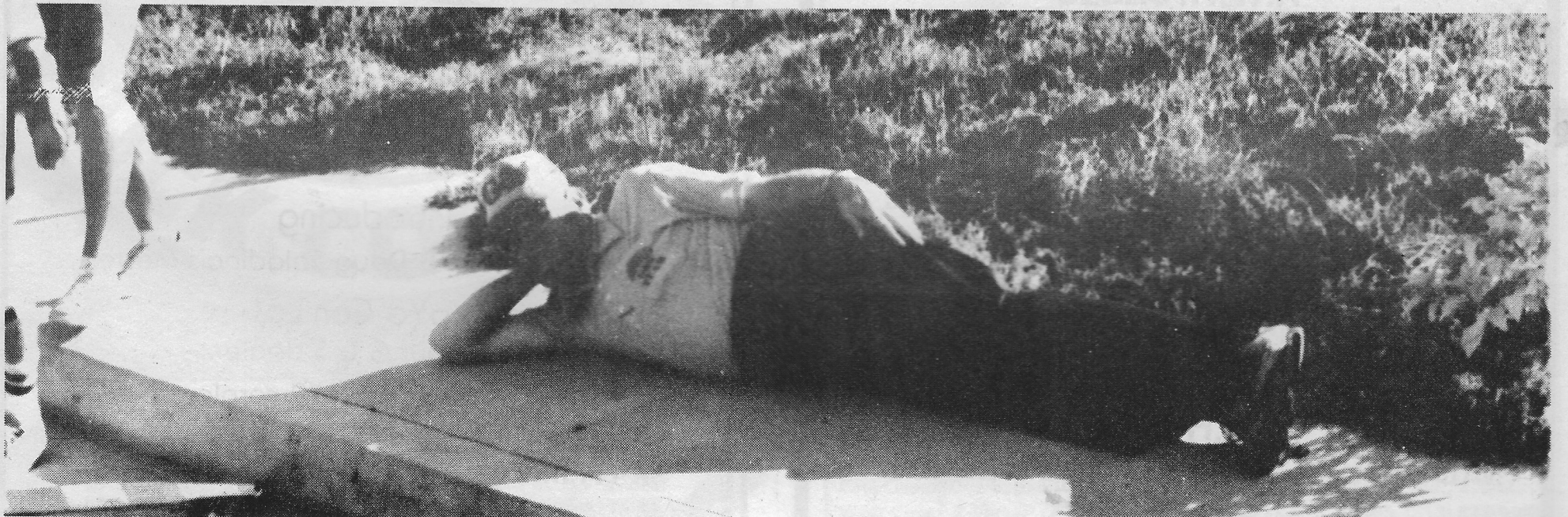
TIGHT SLALOM

1. Tom Ryan	10.17
2. Gib Lewis	10.28
3. Pete Drotleff	10.39

4. Scott Hostert	10.43
5. Chris Foley	10.48
6. Pat Ferguson	11.06
7. Bo Brown	11.58
8. Marc Schmid	12.36
9. Don Baumea	DQ

GIANT SLALOM

1. Gib Lewis	17.84
2. Tom Ryan	18.15
3. Scott Hostert	18.95
4. Pete Drotleff	19.13
5. Kevin Karnes	19.63
6. Pat Ferguson	19.69
7. Don Baumea	21.76
8. Chris Foley	DQ



PAT HAYNES, new Team Captain for G&S, keeping a sharp eye on his boys.

PARK DIRECTORY



No newly opened parks have been reported in. If you know of any in your area, drop me a line (P.O. Box 2204, Leucadia, CA, 92024). A complete listing of verified operating parks was printed in the Dec. '78 issue; the next complete listing will be the June, '79 issue.

PETE MARK shot by Tony Luna at Marina del Rey, Calif.

A.W.H. SALES TOP BRANDS IMMEDIATE DELIVERY

If you are in the SKATEBOARD business, or plan to be, you need our products! We handle the best equipment skateboarding has to offer!

- | | | |
|-----------------|-------------|--------------|
| G&S FIBREFLEX | NORCON | SPEED SPRING |
| ROAD RIDER | Z-FLEX | LAZER |
| POWERFLEX | MACHO | GULLWING |
| RECTOR & WOLFE | TRACKER | BONES |
| KRYPTONIC | ACS | TRITON |
| LOGAN EARTH SKI | BELAIR | UFO |
| SIMS | ALVA SKATES | PRO-TEC |
| DOG TOWN | BADLANDS | HOBIE |
| INDEPENDANT | CASTER | AND MORE! |

If you plan to open a complete skateboard pro shop, or want to expand your present shop, contact us. We can assist you in setting up your shop to fit your needs. Immediate delivery of all orders! Write or call for a catalogue. Dealers only.

A.W.H. SALES MID-AMERICA'S #1 SKATEBOARD DISTRIBUTOR

1026 David St. Evanston, Ill. 60201, (312) 869-0950



Introducing
Dennis Martinez & Doug Saladino's Models

YoYo Conical

See your G & S dealer

or Write for new 1979 catalogue.

**GORDON & SMITH
SKATEBOARDS**

A Christ Centered Company

5111 Santa Fe Street, Suite E
San Diego, CA 92109
(714) 483-3230

Team Leaders Start Own Contest

Team leaders from Sims, Pro-Am Pure Gold, G&S, Van's, D-Beam, and Kanoa met in So. California to discuss current amateur competition programs. The group has decided to make their own contests. They've hired Di Dootson to develop their program with two committees (Finance and Contest Outline) made up of volunteers from the teams.

Dave McIntyre (of G&S, and also Chairman of the I.S.A. Competition Committee) has supported the Ad Hoc Committee since its first meeting in the Van's offices last November. The I.S.A. has offered a meeting space and provided access to its competition book for reference.

Several parks in So. California have been represented at the Meetings. They expressed approval of the group's actions and their intent to join.

The complete I.S.A. Board has expressed an interest in this group's goals and are interested in affiliating the two groups. A proposal to make

the A.R.O. (Amateur Rider's Organization) the amateur arm of the I.S.A. (as the P.R.O. serves the professional skateboarder) is being reviewed by both groups.

The ARO will present a season's long series of contests. Series I will be from Feb. to April, 1979. Series II will be May to July; Series III will be Aug. to Oct. After a successful nine months of competition, point leaders will compete in a Season Finals in November. This schedule leaves December and January as off-season.

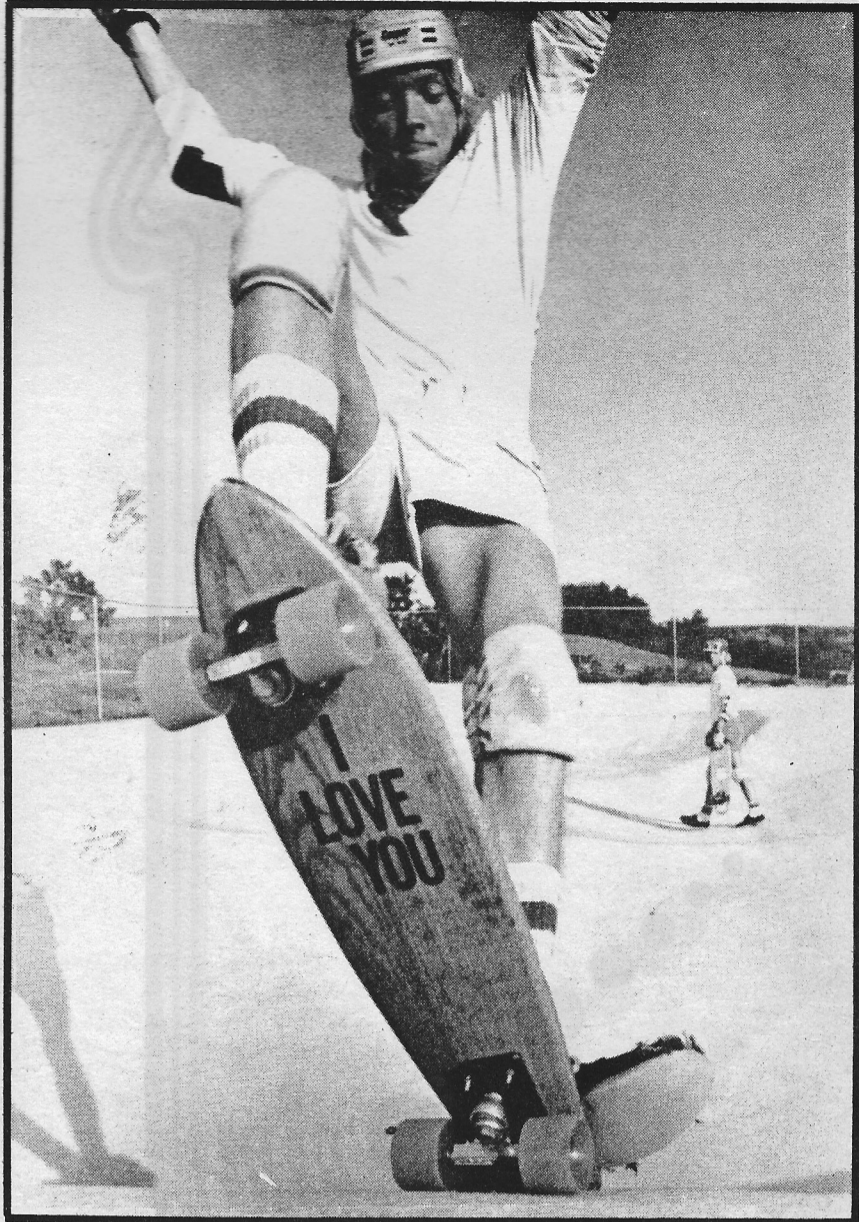
The ARO is concerned initially with conducting low cost, efficient, communicative, pleasant contests in the So. California area. After the bugs are ironed out and production is finely tuned, the program is expandable to areas of the country requesting such a format.

Keep your eyes on this group. This is skateboard contests developed by skateboard team leaders - they know what they need.

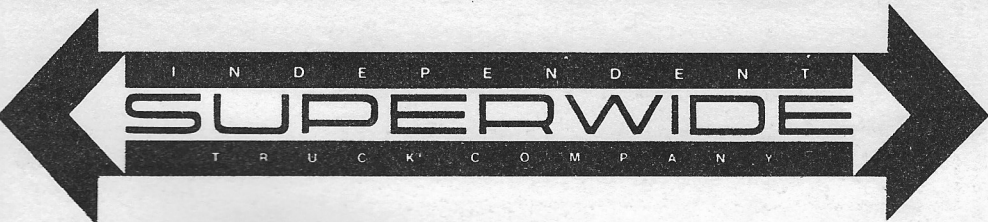
Contest Rumors

Ritchie Carrasco does 98 — 360's, Carlos Santizo does 70.....Layne Oaks dropped by Banzai, now with G&S.....Sabre East team adds Larry Keener.....Brian Lilje just picked up by Kryptonics.....opening of Get Away park in Huntsville, Ala, put off

by rain.....Hester planning his bowl series for '79.....skate convention in Kissimmee, Fla, is pulling a good turn out from the West Coast.....Carlsbad skatepark is closing.....Kim Cespedes working out for next contest at Milpitas.

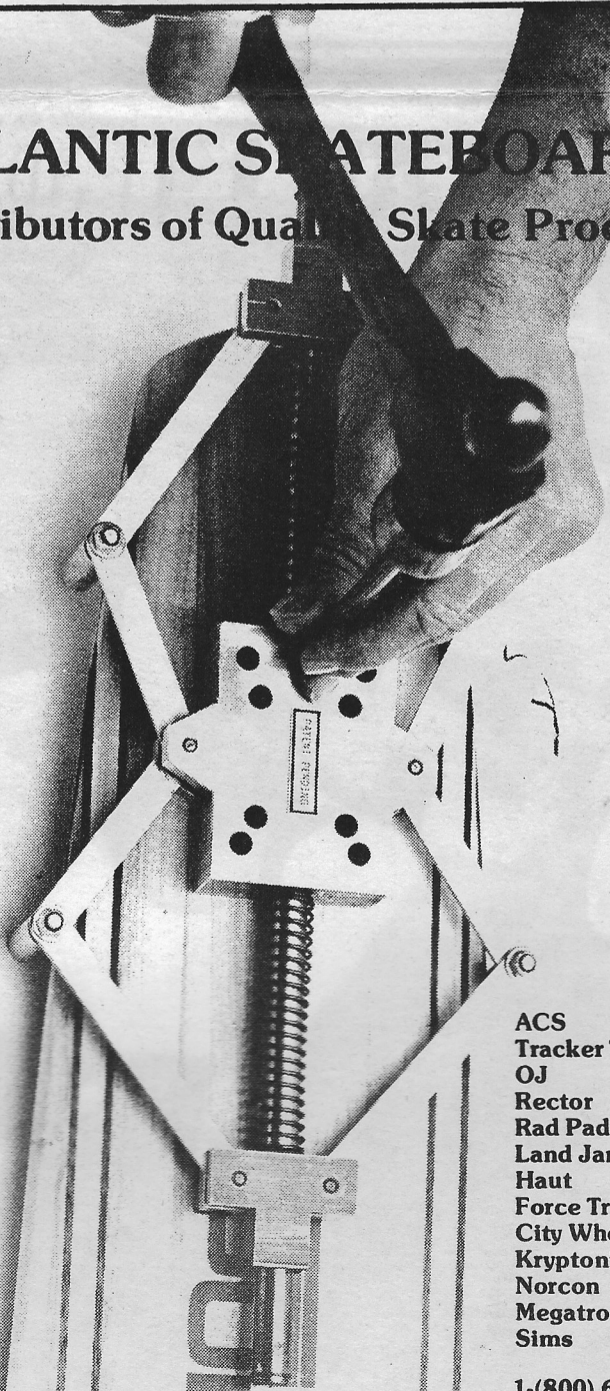


ERIC TOLLGAARD sending Valentine greetings from Carlsbad Skatepark.



ATLANTIC SKATEBOARDS

Distributors of Quality Skate Products



- ACS
- Tracker Trucks
- OJ
- Rector
- Rad Pad
- Land Jammer
- Haut
- Force Truck
- City Wheels
- Kryptonics
- Norcon
- Megatron Trucks
- Sims

1-(800) 638-3562
1-(301) 289-8680

East Coast: Dorsey Truitt 204 S. Philadelphia Ave. Ocean City, Md., 21842.
West Coast: Z-Flex P.O. Box 5397, Santa Monica, Ca. 90405, (213) 822-9988.

Michigan: ENDLESS SUM

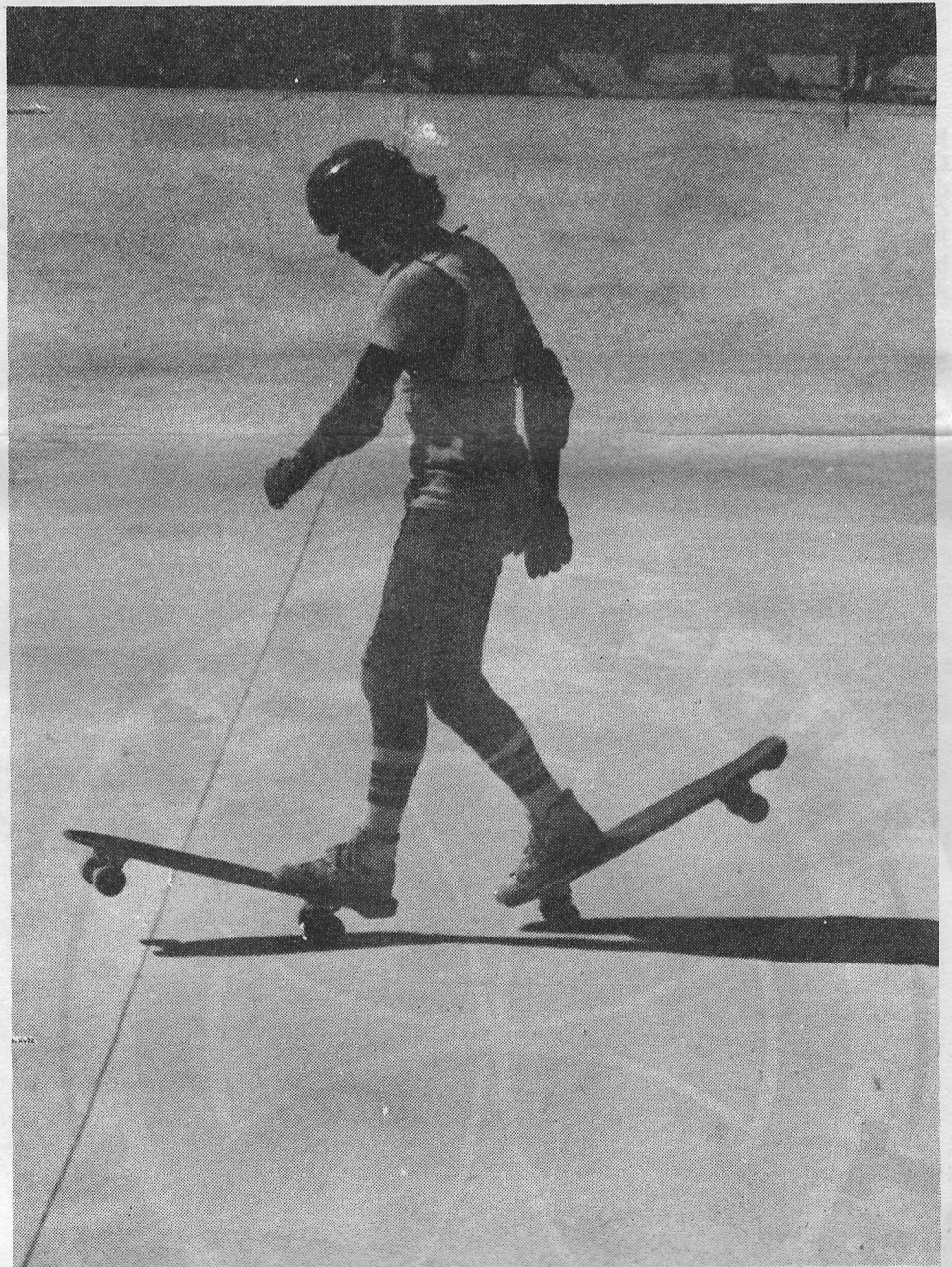
By Ron Zawlocki

The Midwest's largest team competition held at Endless Summer Skatepark, Roseville, Mich., turned into the hottest skate session ever witnessed east of the Mississippi. Out of state skaters began to appear two or three days before the contest, to find the lines which locals had been drawing since July when the park opened. On the day of the tournament 16 teams, consisting of 5-7 members each, came prepared to rip.

Chris Yandall had been working with the Endless Summer staff for two months to assure the smooth operation which took place tournament day. Brian Mc Ginn, Billy Hobbs, and Ray Allsbury, members of the Midwest Pepsi-Cola Skateteam, along with Chris did an excellent job of judging. The events of the contest consisted of a team relay race, flatland freestyle, half-pipe riding, pool freestyle, one wheelers, and aerial in the pool.

Maximum air was seen as the Roach Boys team swept the aerial event. Tom McShane, Endless Summer Team, set a new park record with 26 consecutive one-wheelers. Tom also led his team mates Jim Morris and Scott McPhail to a clean sweep of the half pipe contest. Keith Eastmead, Eastland Schwinn of Columbus Ohio, was totally "rad" displaying elevator drops and a super block session. Especially impressive was the Skateboard Paradise team from Cleveland Heights led by Shawn Scott who cruised the 34 foot vertical walls with reckless abandon.

Trophies were presented to first through third place winners in all age groups. First place winners in all events received some really hot equipment. Sponsors of the tournament were, Kryptonics, UFO, Flite, Pride Plastics, Vision, Lazer, O.J., Gull Wings, Custom Skateboard Shop, California Skateboard Shop, Village Cycle, Endless Summer Skatepark and a special thanks to Dynamic Sports Unlimited.



MARTY COSTANZO (Skateboard Paradise) edged out Rich Leeds for 1st in flatland freestyle.

All Endless Summer photos by t.A. Amori.

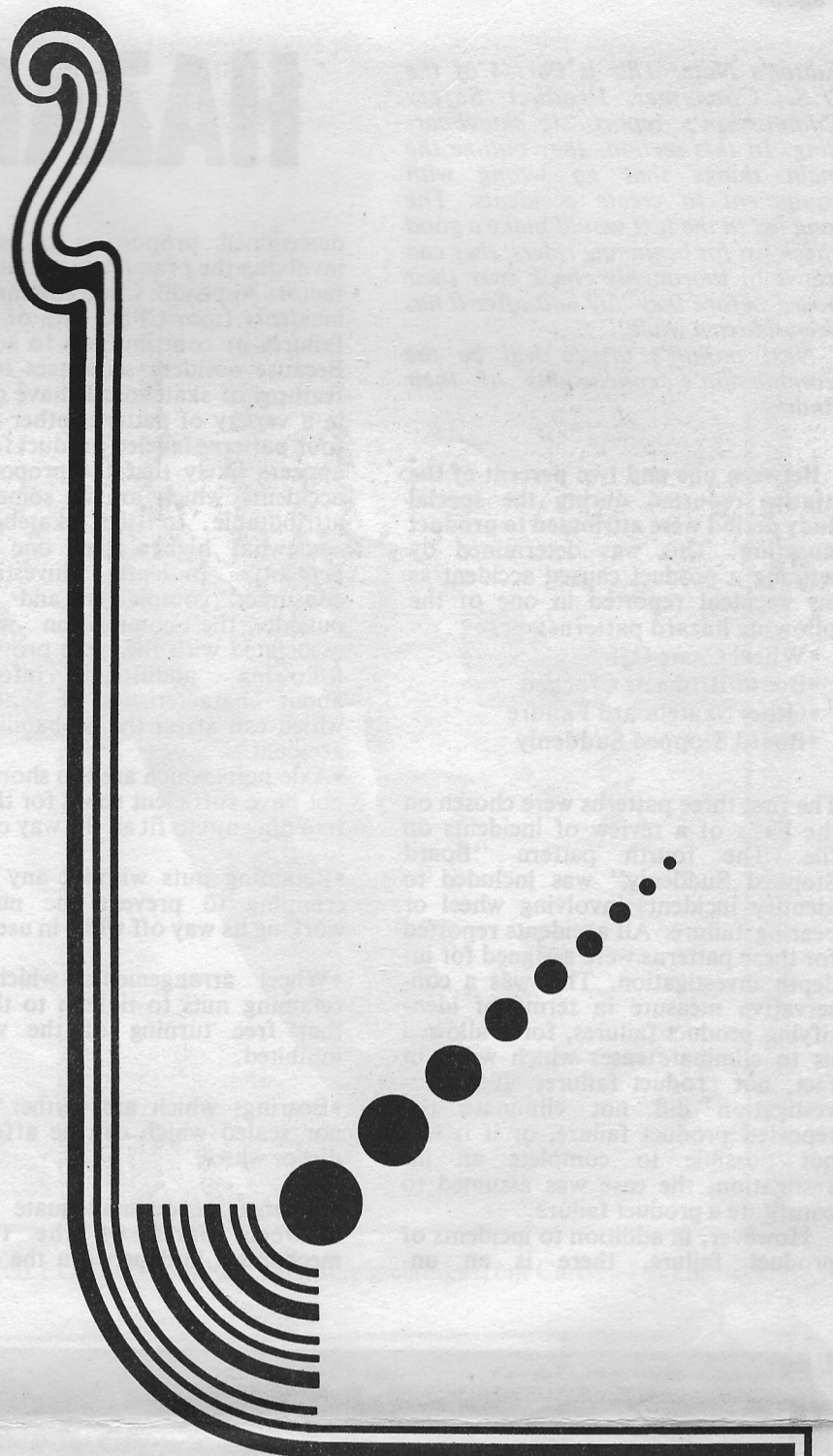


TOM McSHANE (Endless Summer) was a unanimous choice for the Tournament's "Most Valuable Skater" award.

SUMMER TEAM INVITATIONAL



ASHCRAFT (Endless Summer team) working his way to two 1st place wins and one 2nd.



RESULTS

AERIALS

- 1. Jeff Jackson
- 2. Kit Shiger
- 3. Todd Cadieux

CONSECUTIVE ONE WHEELERS

- 1. Tom McShane
- 2. Keith Eastmead
- 3. Kit Shiger

FLATLAND FREESTYLE

- 9 to 11 years:**
- 1. Chris Horoshko
- 2. Jack Toomey
- 3. Jim Woodruff

12 to 14 years:

- 1. Shawn Scott
- 2. Steve Hardy
- 3. Ken Mallica

15 to 17 years:

- 1. Marty Costanzo
- 2. Rich Leeds
- 3. Pat Murphy

18 and Over:

- 1. Pete Ashcraft
- 2. Tom Ferris
- 3. Brian Hall

HALF PIPE

9 to 11 years:

- 1. Brent Mondry
- 2. Al McDonald
- 3. Chris Horoshko

12 to 14 years:

- 1. Bill
- 2. Mike Woodruff
- 3. Shawn Scott

15 to 17 years:

- 1. Tom McShane
- 2. Jim Morris
- 3. Scott McPhail

18 and Over:

- 1. Pete Ashcraft
- 2. Keith Eastmead
- 3. Al Hemminger

POOL FREESTYLE

9 to 11 years:

- 1. Al McDonald
- 2. Brent Mondry
- 3. Dave Lester

12 to 14 years:

- 1. Mike Woodruff
- 2. Ken Malica
- 3. Shawn Scott

15 to 17 years:

- 1. Tom McShane
- 2. Jeff Jackson
- 3. Scott McPhail, Jim Morris, Kit Shiger

18 and Over:

- 1. Keith Eastmead
- 2. Pete Ashcraft
- 3. Al Hemminger

TEAM RELAY

- 1. Eastland Schwinn
- 2. Four Seasons
- 3. Skateboard Paradise

TEAM STANDINGS

- 1. Endless Summer
- 2. Don Thomas Sporthaus
- 3. Eastland Schwinn
- 4. Roach Boys
- 5. Skateland Paradise



The half pipe competition was intense as displayed by this wheeler by Tom Ferris (Eastland Schwinn).

Editor's Note: This is Part 4 of the U.S. Consumer Product Safety Commission's report on skateboarding. In this section, they outline the main things that go wrong with equipment to create accidents. The long list in the text would make a good check list for beginning riders; they can use it to thoroughly check over their board before they buy and after it has been ridden a while.

Next month's article will be the Commission's conclusions of their findings.

Between one and two percent of the injuries reported during the special study period were attributed to product causation. This was determined by defining a product caused accident as any accident reported in one of the following hazard patterns:

- Wheel Came Off
- Board Broke or Cracked
- Other Skateboard Failure
- Board Stopped Suddenly

The first three patterns were chosen on the basis of a review of incidents on file. The fourth pattern "Board Stopped Suddenly" was included to identify incidents involving wheel or bearing failure. All accidents reported for these patterns were assigned for in-depth investigation. This was a conservative measure in terms of identifying product failures, for it allowed us to eliminate cases which were, in fact, not product failures. If the investigation did not eliminate the reported product failure, or if it was not possible to complete an investigation, the case was assumed to constitute a product failure.

However, in addition to incidents of product failure, there is an un-

HAZARD REPORT

determined proportion of accidents involving the product as a contributing factor. Appendix C is a summary of 35 incidents from CPSC files of product failures or contributions to accidents. Because accident sequences involving features of skateboards have occurred in a variety of patterns other than the four patterns labeled product failure, it appears likely that the proportion of accidents which are in some degree attributable to the skateboard is somewhat higher than one or two percent. In-depth investigations, consumer complaints and persons outside the commission who are associated with the sport provided the following additional information about characteristics of skateboards which can affect the probability of an accident.

- Axle bolts which are too short and do not have sufficient room for the wheel retaining nut to fit all the way on.
- Retaining nuts without any type of crimping to prevent the nut from working its way off while in use.
- Wheel arrangements which allow retaining nuts to tighten to the point that free turning of the wheel is inhibited.
- Bearings which are neither shielded nor sealed which can be affected by dirt or water.
- Absence of or inadequate isolaters between parts of the trucking mechanism and between the trucking

mechanism and the deck, resulting in high levels of vibration.

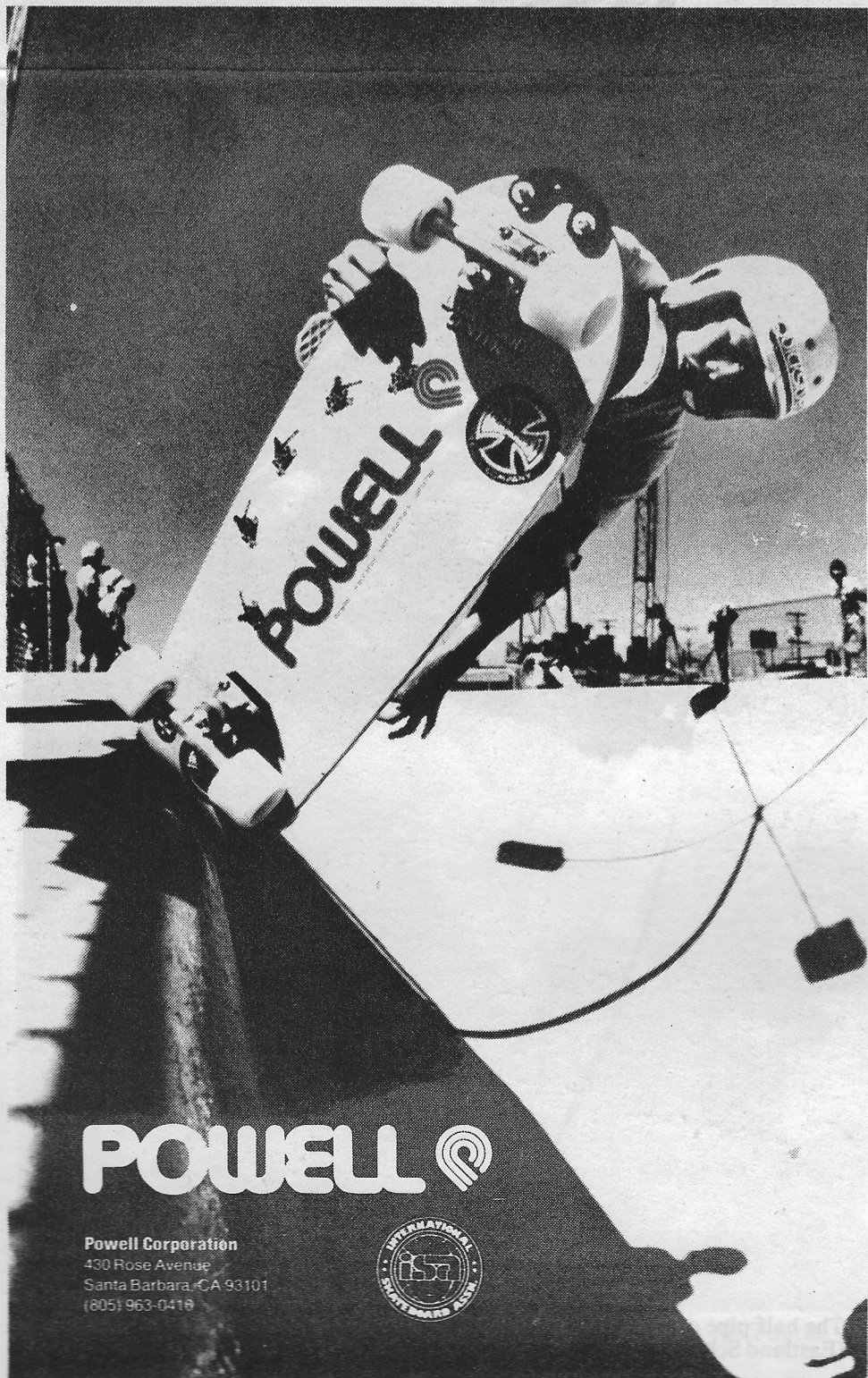
- Insufficient flexibility in trucking mechanism which does not allow the rider full control of the board.
- Insufficient distance between deck and wheels which results in deck contact with the wheels, particularly while turning.
- Wheels made of materials such as metal or clay which do not provide adequate traction with the riding surface.
- Polyurethane wheels which pit (get holes and nicks in them) during use resulting in an uneven wheel and rough ride because of a poor mix of materials.
- Materials used for decks which crack or break in use or which flex when stepped on but do not return to original configuration. This eventually results in a board which sags in the middle and increases the risk of other types of accident.
- Adjustment screws or other parts of the trucking mechanism which can contact the ground while the skateboard is in motion.
- Trucking mechanisms cast of brittle metal which fractures from use.
- Deck surfaces of boards which are slippery.

- Nylon bearings, some of which can melt due to heat build up.
- Metal boards can become sharpened along the edges from contact with the ground.
- Wheel assemblies sold with some of the ball bearings missing.
- Loose or missing screws from truck to deck assembly resulting in inability to control the board.

In addition to these factors, the length, width, and wheelbase all have an effect on the stability and manageability of the board. There are three distinct subdivisions to skateboard types as they relate to intended use. These are: speed or downhill, slalom, and freestyle. For each type of use there is a combination of deck width, truck flexibility, wheelbase, wheel width, and wheel hardness that is appropriate, thus it is possible for a non-expert to purchase a board which is not appropriate for his purposes. It should be pointed out that the component parts of skateboards are all sold separately, as well as included in pre-assembled boards.

Components are generally identified as to intended use so that the person who is building or modifying a skateboard can choose according to his needs. *The same is not true of assembled boards.*

In light of the factors described, product failures constitute a small proportion of the 106,000 skateboard-related injuries treated in hospital emergency rooms over a 12-month period, but the proportion of accidents affected by product attributes has not been determined.

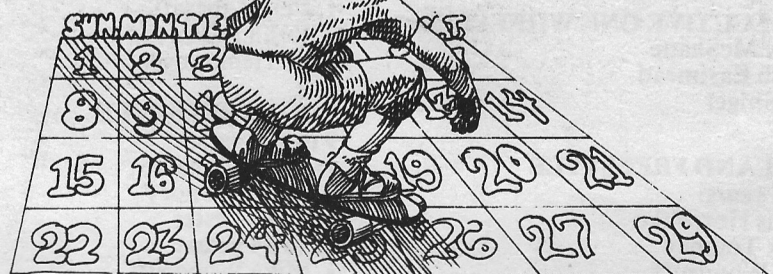


Palos Verdes Race

Mainsail Dr. was the street used for the Jan. 4 Palos Verdes race in Calif. It was set up similar to the La Costa races. Gib Lewis, in fact, started the races in Palos Verdes after joining many races at La Costa. Due to the threat of severe rain storms many of the interested racers didn't make the trek on the freeway to show but the locals were there. Gib set a 39 cone offset course finishing in a tight section. He provided the electrical timing also. Next P.V race is set for Feb. 11.

SLALOM RESULTS	
1. Greg Taie	11.65
2. Paul Butler	12.05
3. Gib Lewis	12.27
4. Scott Hostert	12.29
5. Craig Stein	12.81
6. Kevin Karnes	13.25
7. Randy Grove	14.26
ROLLER SKATE RESULTS (Wild Wheels Team)	
1. Keith	13.94
2. Spot	14.25
3. Bob Wheeler	17.02

CALENDAR



- FEBRUARY**
- 3 - Lakewood, Calif; CONTEST; call 213/531-4855 for info.
 - 10 - TBA*; first CONTEST of the ARO (Amateur Rider's Organization); flatland freestyle; \$6 entry fee; teams MUST pre-register via your team leaders; call 714/753-6214 for info.
 - 11 - Palos Verdes, Calif; SLALOM RACE; mixed pros and amateurs, La Costa style; call 213/372-8082 for info.
 - 17,18 - Catonsville, Maryland; PRO-AM CONTEST; at Cascade Skatepark; call 301/788-2622.
 - 24 - TBA*; ARO #2 in Series I; slalom; call 715/753-6214
 - 24, 25 - Lakewood, Calif; PRO HALF-PIPE CONTEST; at

Lakewood Skatepark; \$1000 for first, pays to fourth; women's division also pays to fourth; \$75 entry fee; trials on Sat., finals on Sun.; call 213/531-4855.

MAY

13 - Pebble Beach, Calif; SPEED RACE; by Downhill Racing Society; have to be 18 years old to enter; banner spaces available; call Fred Lowery at 408/373-8272 for information.

*TBA = to be arranged

NOTE: ARE ANY OF YOU GUYS HAVING CONTESTS OUT THERE? GOT ANY PLANNED? WANT ANYONE TO KNOW ABOUT IT? Call (714/753-6214) or write in the details (NSR, P.O. Box 2204, Leucadia, Ca 92024).



Canadian Pro Am

BACKGROUND OF THE ASSOCIATION

The Canadian Pro-Am Skateboard Association is a non-profit association registered with the office of the Minister of Consumer and Corporate Affairs, Ottawa, (film 417, document #37).

Although the Association was officially recorded on the 21st of April, 1977, our roots go back to the spring of 1976. At that time, some of the current officers of the Association were running safety clinics in cooperation with the YMCA's in British Columbia, a program that eventually led to the First Annual British Columbia Skateboard Championships held on September 11, 1976, in Vancouver's Stanley Park. Shortly after the Championships, the Kelly Douglas Company approached these individuals in regard to putting together a National Skateboard Association with the emphasis on promoting safety in skateboarding and leading to the formation of National Skateboard Championships. Through their financial assistance, the legal forms necessary to incorporate the Association were drawn up, and on March 7, 1977, the Canadian Pro-Am Skateboard Association became a reality.

THE ASSOCIATION'S OBJECTIVES

The Canadian Pro-Am Skateboard Association has been formed for the skateboarder. Our main function and goal is to promote skateboarding as a recognized safe and healthy recreational activity across Canada. The Association has been employed towards this end in a very comprehensive manner.

THE ASSOCIATION'S PERFORMANCE RECORD

SAFETY CLINICS held at YMCA's, schools, community centers and parks number well over one hundred. Clinics include basic skills and maintenance with emphasis on SAFETY.

SAFETY COURSES in conjunction with the Vancouver Safety Council and Parks Board have been conducted for the past two years. Attending police and playground personnel were exposed to skateboard information they could use in their own areas.

SAFETY PAMPHLETS produced by the Association, with the generous assistance of Kelly Douglas and Co. Ltd., and George Weston Limited, are now in their fourth printing. Over 550,000 copies have been distributed through schools and community centers across Canada and Safety Councils

DEMONSTRATIONS by our Association Demo Team, the Ripping Squad, have been well received throughout British Columbia and Canada. They offer the viewer a contemporary display of the state of the art, stressing the importance of safety and protective equipment for high performance skateboarding. These demonstrations range from football and soccer games to T. V. Telethons.

SKATEBOARD PARKS have also become an active part of the Association's past. In August, the Canadian National Parks and Recreation Conference was held. We met with them and outlined the importance of skateboard facilities and how they fit into today's community recreational developments. This was a

follow up to a meeting of nearly two years ago, in which the Association and the West Vancouver Parks Department finalized plans to put in an experimental park in preparation for this national conference. This park, which was opened to the public in August of 1977, is now one of five free community parks in Canada, with several more in the planning stages. Along with the above mentioned West Vancouver facility, which was the first Canadian skatepark, the Association has been involved in other community facilities in North and East Vancouver, as well as the following commercial parks, Skatopia I in Calgary, and the Skateboard Palace in Burnaby.

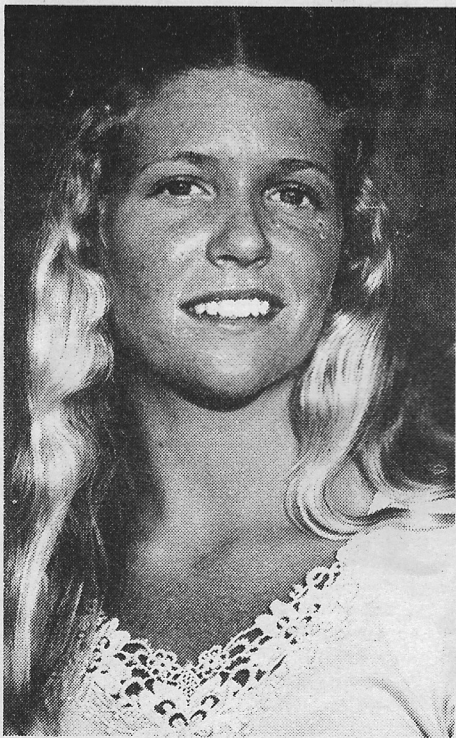
MEMBERSHIPS

GENERAL MEMBERSHIP for professional and amateur skateboarders and those interested in the sport. The annual \$4.00 fee provides the CPA with funding to do research, which is passed on to its members in the form of the CPA Newsletter. A CPA decal for your board, embroidered patch, safety pamphlet and membership card are also included in the package.

TEAM MEMBERSHIP (Canadian Pro-Am Demo Pool) is an organization for demo teams across Canada that are helping to fill the need and demand for Safety Clinics and Demonstrations. The annual Team Membership is \$25.00 per team. Guidelines on how to run a Safety Clinic, Demo, and Contest are provided as well as CPA Demo Pool decals for each team member's helmet and board. When requests for a team in your area come to the CPA we forward them on to you. We do not expect any part of the fee you may charge, but ask that you put any money received from doing clinics etc. into making your own teams appearance and demo's more Professional. (Uniforms, P.A. System, slalom cones, ramps, etc.)

SUPPORTING MEMBERSHIP is available for all those involved in the business of skateboarding, manufacturers, distributors of equipment, pro shops and sporting goods stores, municipalities interested in the safe development of the sport and staging their own clinics and events, and for other associations. This annual \$50.00 fee is designed to set up the member as a centre of information on skateboarding in their own area. Guidelines on how to run a Safety Clinic, Demo, and Contest's are provided as well as CPA Newsletters, decals, and membership certificate. Members may also advertise in the CPA Newsletter and their demo team automatically becomes part of the CPA Demo Pool, as long as Team members are CPA members.

SKATEPARK MEMBERSHIP is designed to provide owners, managers, and developers with information and consulting services on an ongoing basis. The annual fee of \$250.00 per park not only sets the park up as a centre of information on skateboarding and the CPA but supplies the CPA with a location for contests, clinics etc. This membership also includes all benefits and items in both TEAM and SUPPORTING MEMBERSHIP packages.



ELLEN O'NEAL, formerly of the Gordon and Smith pro team, is now circulating as a free agent. Her future plans are not known at this time.

DEADLINES: for articles and photos going into the next [Mar.] issue is Feb. 9; camera ready ads are due Feb. 16.


Photo: Buffalo

Hobie Pro Duane Peters ripping on a Rad Ramp.

DON'T GET LEFT BEHIND!



Claws Rip



ASK FOR **CLAWS™** AND THE NEW **CONICAL CLAWS CHEATERS™** AT YOUR LOCAL PRO SHOP.

SPECIAL OFFER !!!!!

CLAWS™ T-Shirt and 5 decals:
Send size (S-M-L-XL)
and check or money order.
Only \$5.00
(Good until April 15, 1979)

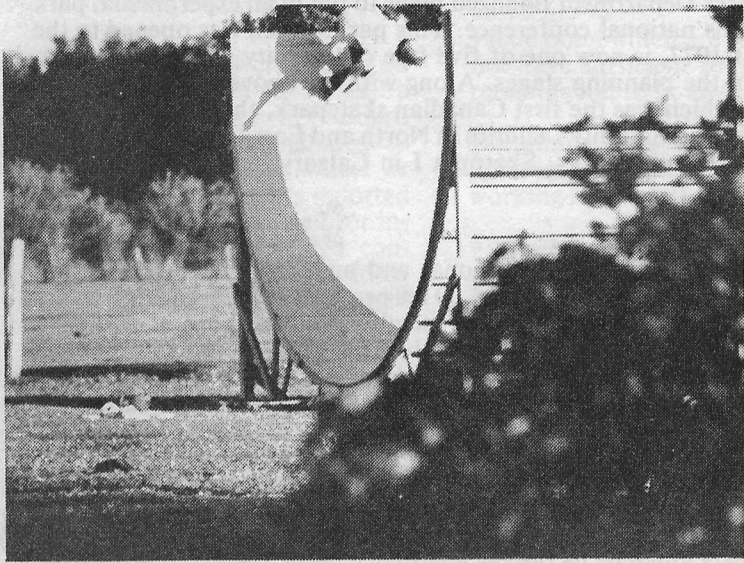
HOBIE SKATEBOARDS® Dept. N-2 P.O. Box 812, Dana Point, Calif. 92629



STEVE FERRIS.



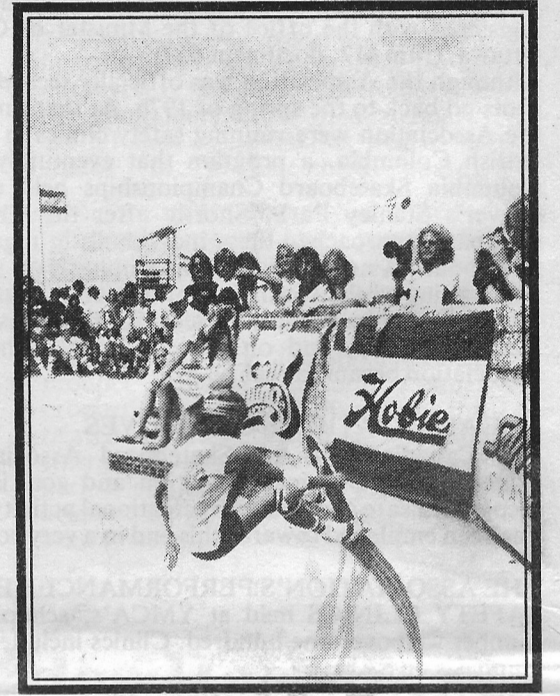
BOB SKOLDBERG. Photo by Stahl.



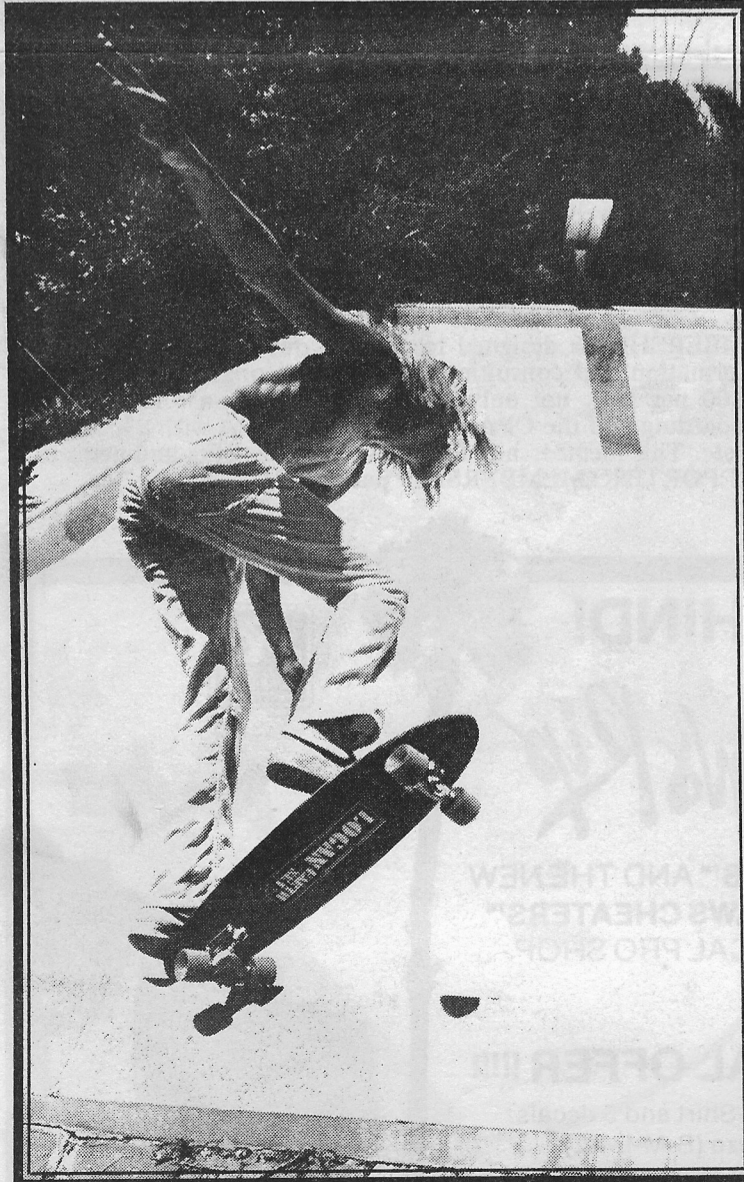
ALAN GELFAND. Photo by the Kingfish



Photo by Spot.



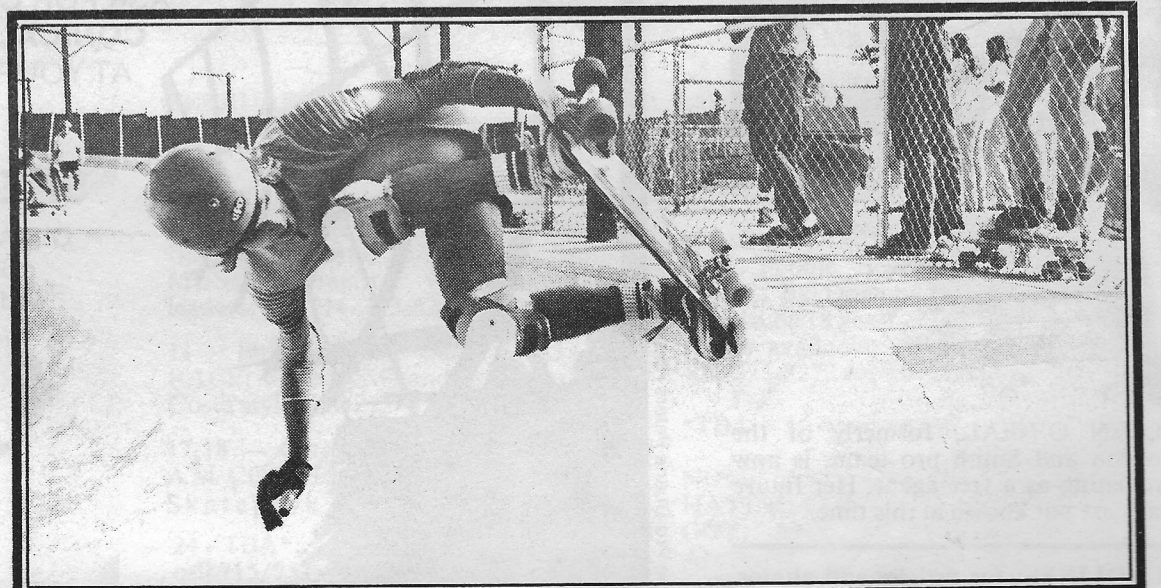
Hester's #1 '78 Pro Bowl.



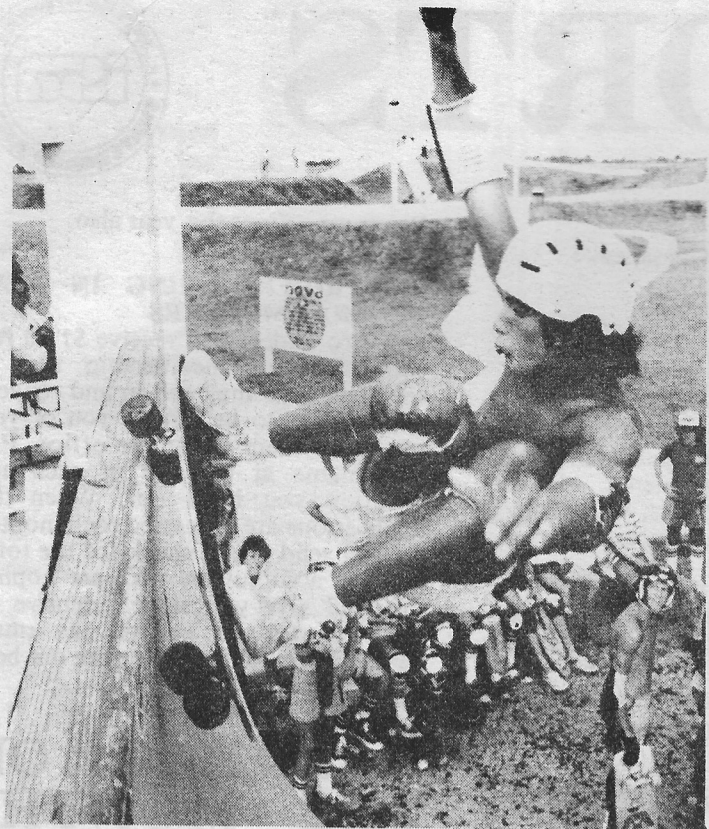
ERIC TOLLGAARD. Photo by Stahl



JEFF TATUM. Photo by Steve Sherman.



TONY LUNA. Photo by Pete Mark.



The NSR is unloading its photo file of out-dated prints ('77,'78). Over 1,000 pictures of pros and amateurs; pool, park, slalom, freestyle and pipe riding; men and women; action and misc. photos. Many are from major competitions: Hester's Series, Akron, Colorado circuit, Signal Hill, Long Beach Freeformer. Send \$5 and receive 5 assorted black and white photos; includes postage and handling. Order now, I'll send the best ones out first. Offer expires March 31, 1979. For personal use only; not to be used commercially. There will be no refunds or exchanges. Send to: NSR, P.O. Box 2204, Leucadia, Ca, 92024.

Photo
Packet

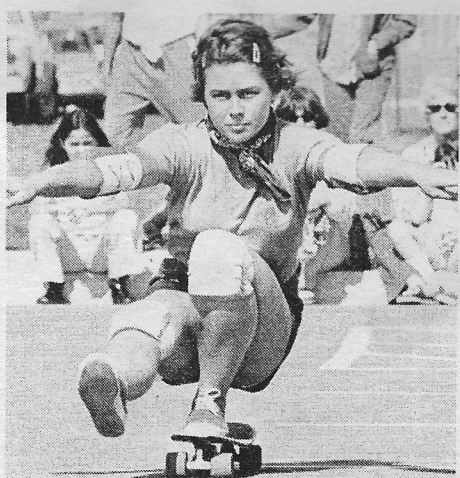
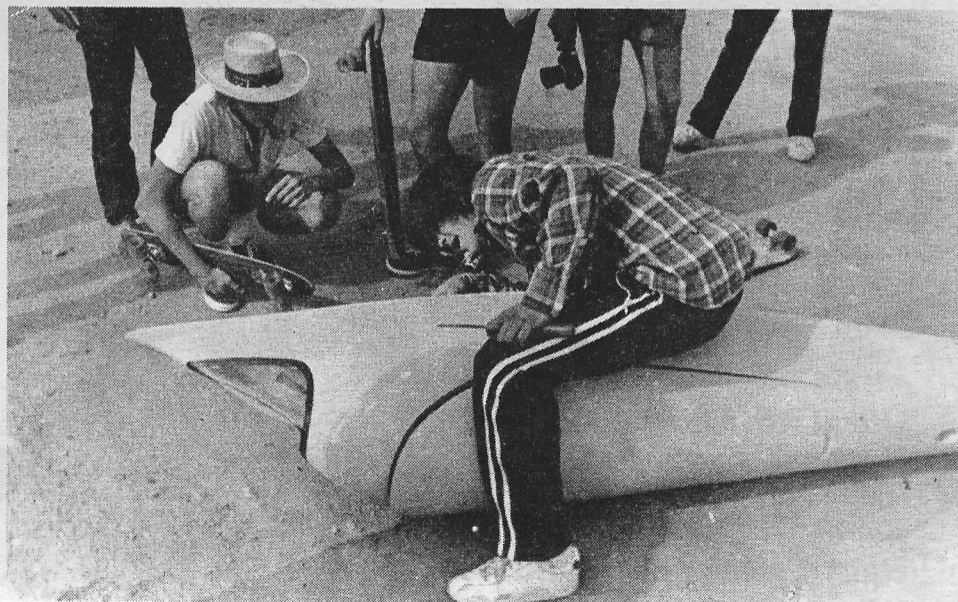
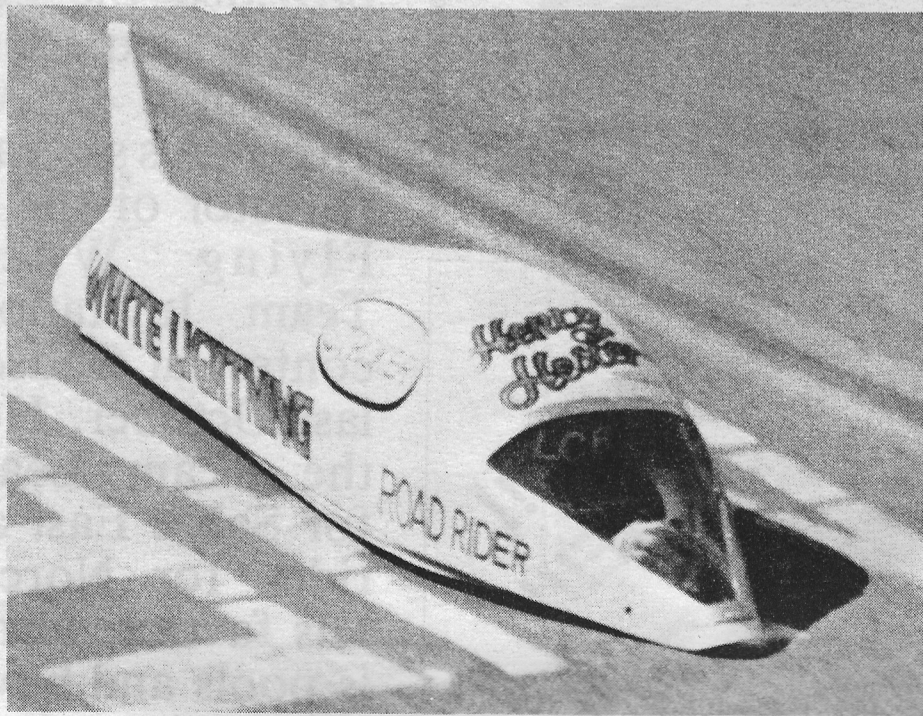
Grab
Bag
Sale!

Hey Di, send it to me now! Enclosed find a ()check/()money order for \$5. Mail my five pictures to:

Name: _____

Address: _____

Zip Code: _____





I.S.A. REPORTS



I.S.A. WELCOMES NEW MEMBERS

CALIFORNIA

Scott Dolgin - Concord
Ed Kenny - Dana Point
Jonathan Corwey - Los Angeles
Bill Dorr - Los Angeles
John Adams - San Dimas

FLORIDA

Ernesto Valdes - Miami

GEORGIA

Chris Bewley - Clarkston

ILLINOIS

Karen Engle - Oak Forest

INDIANA

Sharon Sheets - Dyer

KANSAS

Brian Gordon - Overland Park

KENTUCKY

Donna Robertson - Barlow

LOUISIANA

Jarbo Wall - Tallulah

MASSACHUSETTS

Eddie Kraus - Middleboro

MICHIGAN

Filip Khan - Detroit

NEW JERSEY

Jeff Gaston - Rosemont

Rob Zangara - Sportswood

NEW YORK

Cindy Isaacs - Tappan

NORTH CAROLINA

Steward Roberts - Roseboro

RHODE ISLAND

Ryan Phillips - Jamestown

TENNESSEE

Marc Kent - Johnson City

Steve Ward - Johnson City

TEXAS

Travis DeArman - Ft. Worth

VIRGINIA

Trent Woodard - Chesapeake

HONG KONG

Kiki Lee

ISA TELEPHONE SERVICE

If you have had trouble reaching the ISA recently, we were on vacation between Christmas and New Year. Sorry for the inconvenience. Also due to a cut back in services, we no longer have our answering service.

1979 GOALS FOR ISA

The ISA will be putting more emphasis on amateur competitions this year. We are currently setting up dates and places and will let you know more next month. There will still be some major

Pro competitions this year also.

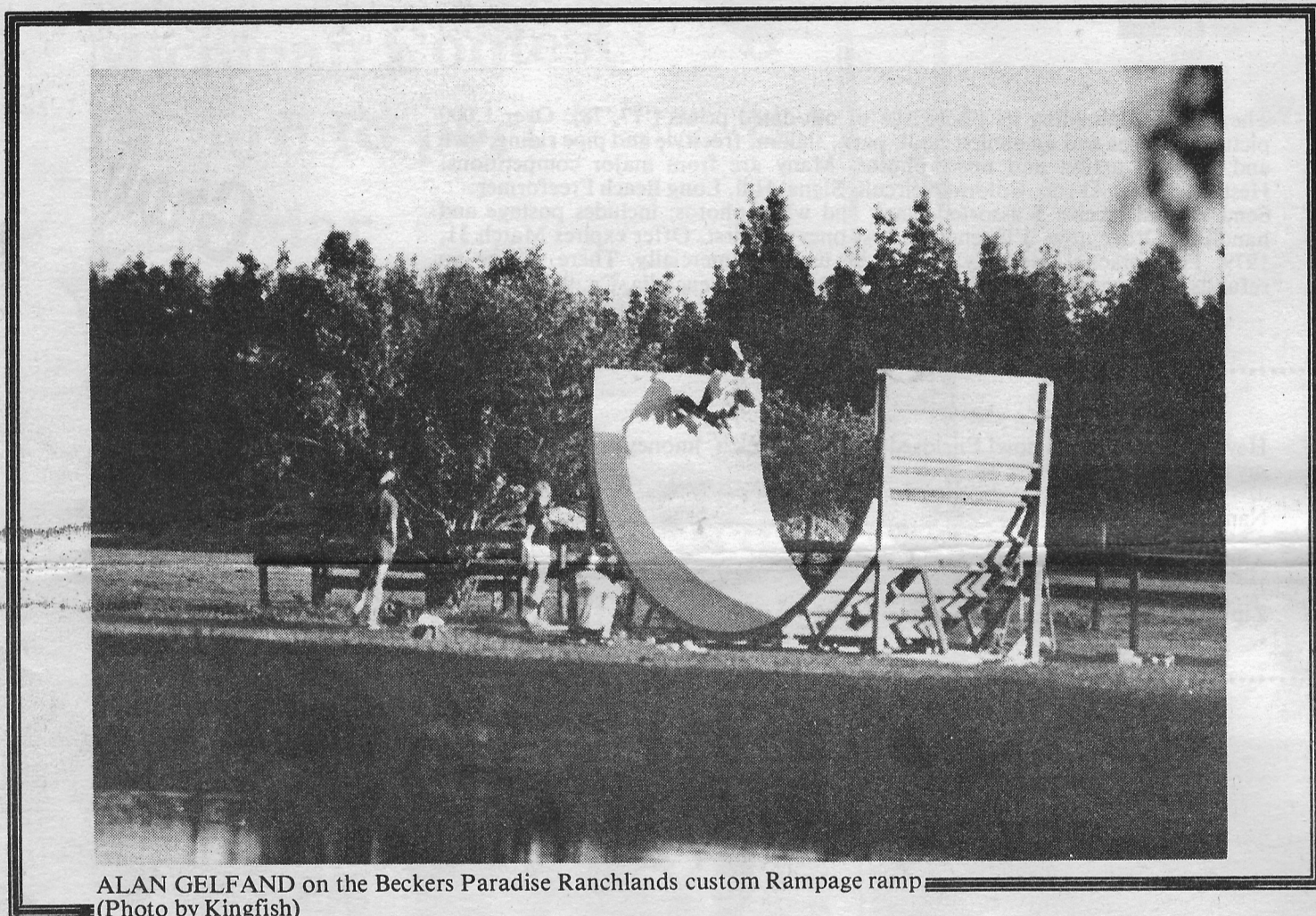
PRO RIDERS BRING IN NEW GENERAL MEMBERS

ISA Pro Riders will receive \$1.00 for every amateur membership that is solicited. You may call in and request applications to be sent to you or you may pick them up at the office. Put your name at the top of each application you hand out. When the applications are processed each month, we will send you a check for the total amount accumulated. We are hoping this will give you some incentive to advertise for us as well as small payment for doing so. You are our best advertisement.

P.R.O. RIDER OF THE MONTH: Patrick Wachter

Patrick is presently resident pro at the Get Away Skatepark in Huntsville, Alabama. His interest in skateboarding started when he was working for Southeast Sales in Georgia. As each park in Alabama was built, he provided the bowl rider's experience in design. He was the Assistant Director of the '78 Flying Wheels Team Invitational contest at Gadsden last October. He is the Team Leader for Sabre East and rides for Norcon. His favorite terrain is pools and bowls, but he has always kept his hand into slalom racing. He's been skating for 3 years.

We applaud his years of hard work and his continual drive for safer and stronger skateboarding.



ALAN GELFAND on the Beckers Paradise Ranchlands custom Rampage ramp
(Photo by Kingfish)

ACS LITE II

UltraLite Alloy - over 90% Magnesium

ACS 800

Heat Treated Aluminum

PLUS:

- Single nut adjustment
 - Re-enforced tip and cushion support areas
 - 8 inch axle of grade 8 alloy steel
 - High grinder bar
 - Glide-free base plate
 - 4-hole mounting pattern
 - Finish
- ACS Lite II — baked white enamel
ACS 800 — polished aluminum



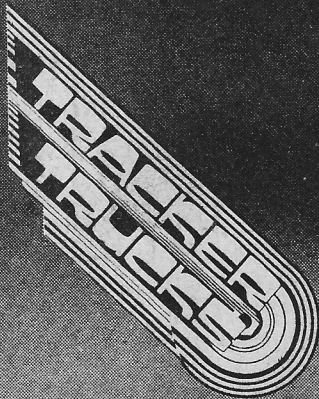
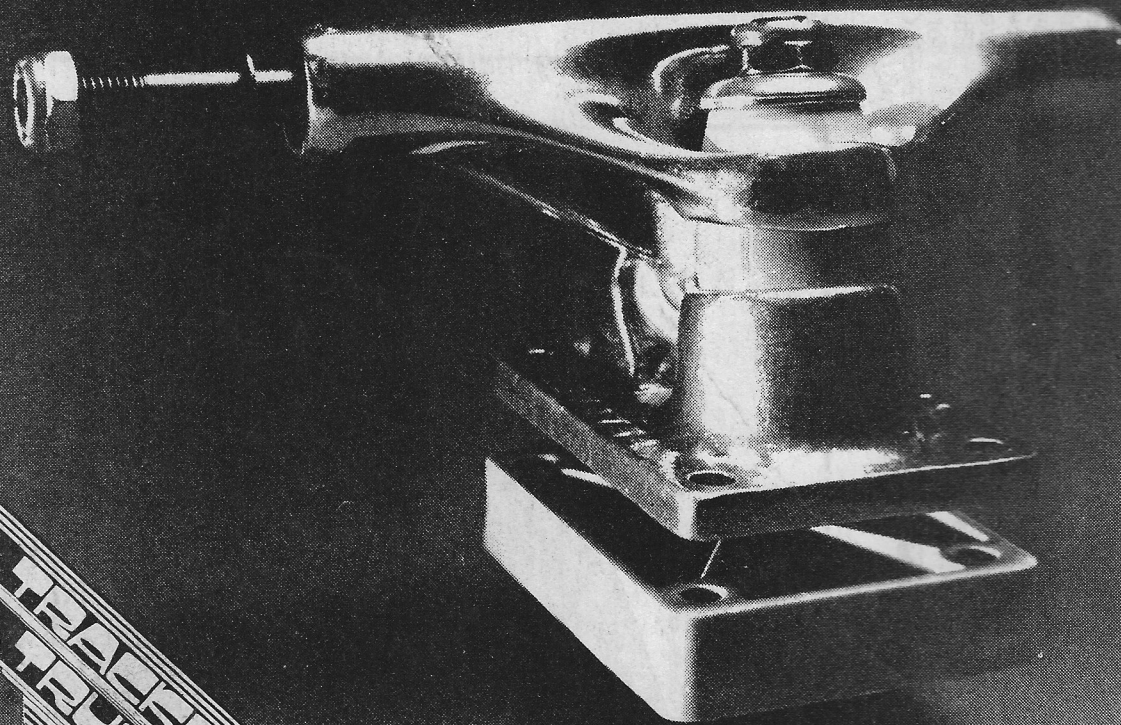
ACS LITE II



American Cycle Systems, Inc. • 1449 Industrial Park St.
Covina, Calif. 91722 USA • Tel. (213) 331-0582



NATIONAL SKATEBOARD REVIEW
P.O. Box 2204
Leucadia, CA 92024
714/753-6214



TRACKER EXTRACK

Send 50¢ for brochure, order form and sticker to: Tracker Trucks, P.O. Box 398, Cardiff-by-the-Sea, California 92007